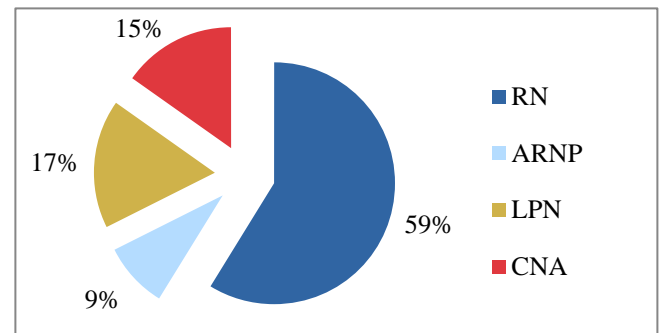


This document provides key results for Public Health Departments in Florida. Data are from the Florida Center for Nursing's 2011 Nurse Employer Survey, conducted from July through September 2011. 46 of the 67 public health departments (68.7%) responded. Follow this link to access the full report: [Demand for Nurses in Florida: The 2011 Survey of Florida's Nurse Employers](#).

**Employee Status as of June 30, 2011**

Nurse Type	% permanent full-time	% permanent part-time	% per diem/agency
RNs	86.4%	11.3%	2.3%
ARNPs	68.3%	25.1%	6.6%
LPNs	76.8%	18.1%	5.0%
CNAs	97.0%	2.3%	0.8%

**Nursing Staff Mix by Category**



*Most public health department nurses work full-time, although 25% of ARNPs work part-time. The nursing staff mix is approximately 59% RNs, 9% ARNPs, 17% LPNs, and 15% CNAs.*

**Total Separations Reported by Public Health Responders (7/1/2010 – 6/30/2011)**

Nurse Type	# Separations Reported
RNs	177
ARNPs	28
LPNs	90
CNAs	46

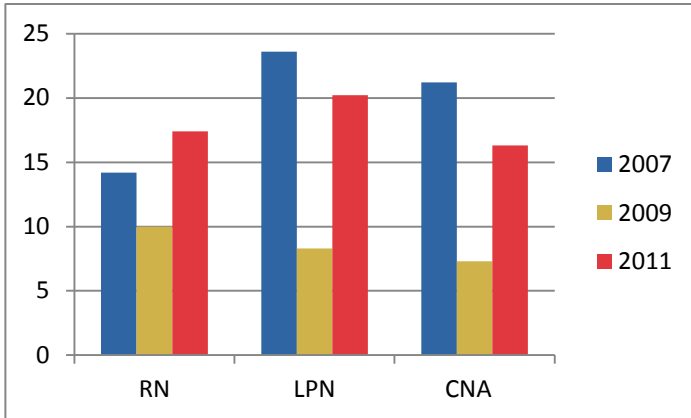
**Facility Level Turnover Rates as Reported by Public Health Departments (7/1/2010 – 6/30/2011)**

Type	Average Turnover Rate	50 <sup>th</sup> Percentile (Median) Turnover Rate
RNs	17.4%	15.6%
ARNPs	19.9%	0%
LPNs	20.2%	0%
CNAs	16.3%	0%

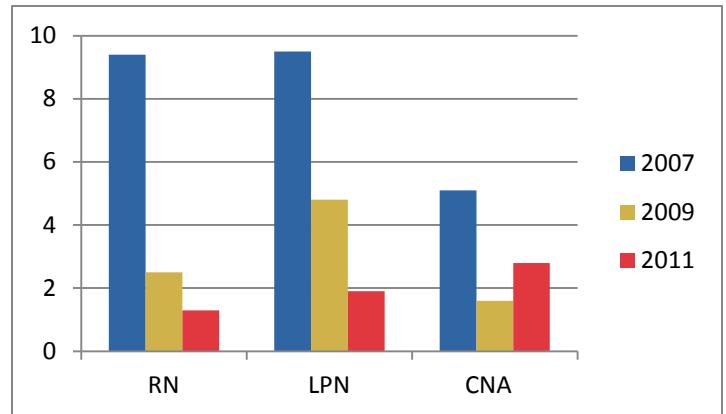
Note: The higher average rates indicate the presence of outliers that skew the average higher. A zero percent median indicates that at least half of facilities had a zero percent turnover rate.

*Public health departments responding to the survey reported 177 RN separations from July 2010 through June 2011. The average public health department turnover rate was 20% or less for all types of nurses.*

### Trend in Average Turnover Rates, 2007 to 2011

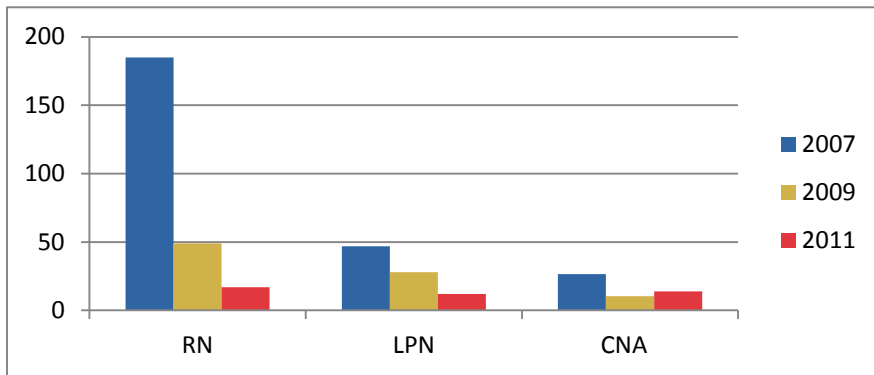


### Public Health Full-Time Equivalent Vacancy Rates, 2007 to 2011



*Average turnover rates for all types of nurses employed in public health departments have increased from 2009 to 2011. Vacancy rates have decreased from 2007 to 2011 for LPNs and RNs, but increased in 2011 for CNAs.*

### Trends in Estimated Number of Vacancies in Public Health Departments Statewide, 2007 to 2011



*The estimated number of vacancies for nurses in public health departments has decreased since 2007. In 2011, the estimated number of vacancies is fewer than 20 for each type of nurse.*

*The estimated 2012 growth for nurses in public health departments remains low. Statewide budget cuts have limited the ability to hire public health nurses.*

### Combined Vacancies (as of June 30, 2011) and Projected Growth in Public Health Statewide (through 2012)

	RN	LPN	CNA
Estimated Vacancies (2011)	17	12	14
Estimated Growth (2012)	31	8	12
<b>Combined Total</b>	<b>48</b>	<b>20</b>	<b>26</b>