

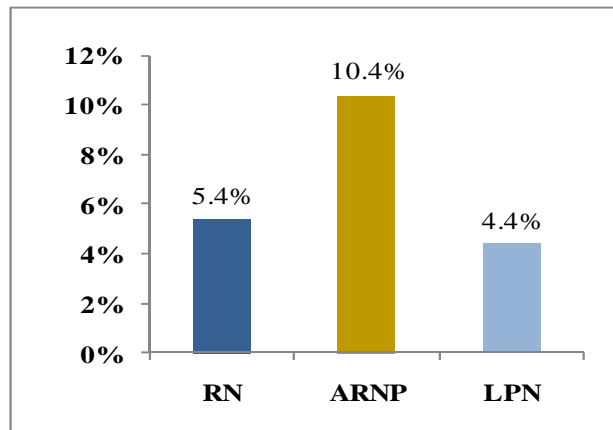
## Statewide Status Report on Nursing Supply, Demand, and Education August 2009



**Potential Nurse Workforce<sup>1</sup>**

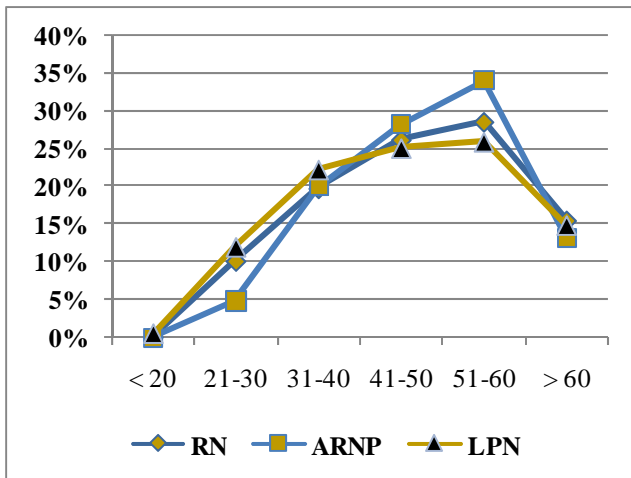
	2007	2009	Change in Size
<b>RN</b>	169,555	178,677	9,122
<b>ARNP</b>	10,528	11,625	1,097
<b>LPN</b>	56,004	58,491	2,487

**% Change in Potential Nurse Workforce, 07-09<sup>1</sup>**

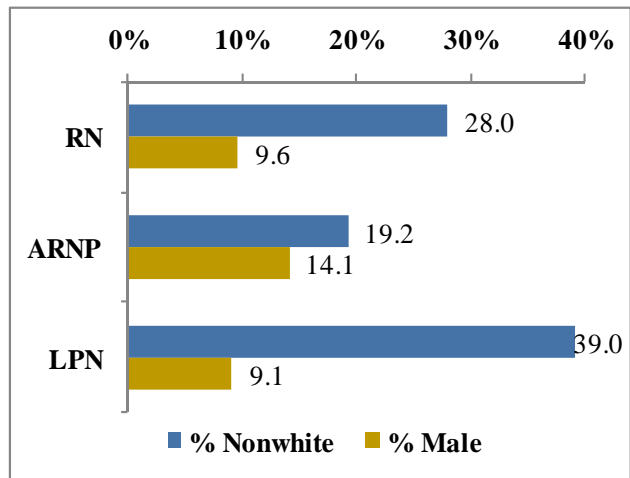


The potential nurse workforce in Florida – those with an active license, eligibility to practice, and a Florida address – increased by 5.4% over two years. The ARNP population grew most rapidly.

**Average Age: RN-47.7; ARNP-48.7; LPN-46.6<sup>1</sup>**

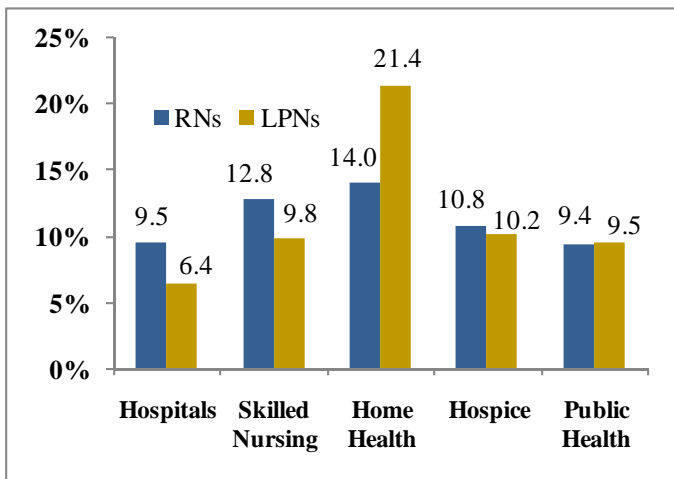


**Gender and Racial/Ethnic Diversity<sup>1</sup>**



Licensed nurses in Florida are rapidly nearly 50 years of age, on average. The profession remains female dominated, and the majority of nurses report non-Hispanic White race.

### Full-Time Equivalent Vacancy Rates By Industry as of 06/30/2007<sup>2</sup>



### Estimated Full and Part-Time Vacancies as of 06/30/2007<sup>3</sup>

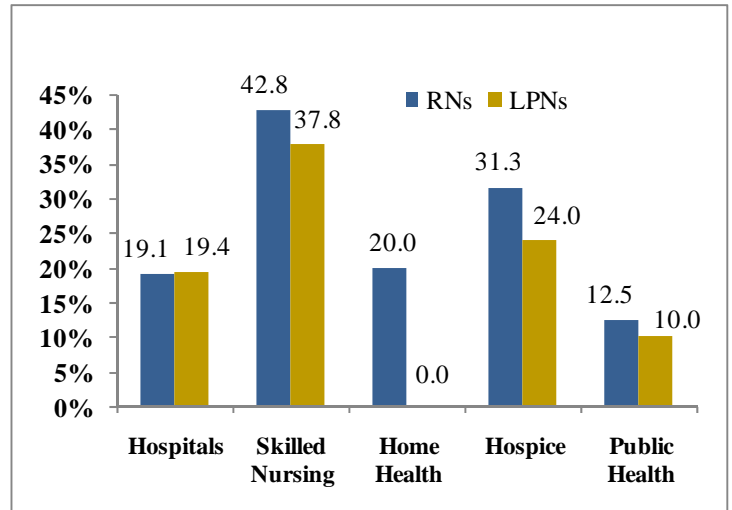
	Estimated RN Vacancies	Estimated LPN Vacancies
Hospitals	7,649.3	482.2
Skilled Nursing	960.2	1,739.9
Home Health	1,151.7	518.6
Hospice	490.7	184.0
Public Health	185.2	47.4
<b>Total</b>	<b>10,436.9</b>	<b>2,972.3</b>

Vacancy rates for RNs in Florida were above 9% in all industries surveyed. Rates for LPNs were also above 9% in all settings but hospitals. The highest vacancy rates were reported by home health agencies. An estimated 10,437 RN positions were vacant in the five settings surveyed as of June 20, 2007. An estimated 2,972 LPN positions were vacant.

### Estimated Full and Part-Time Position Growth for 2008<sup>3</sup>

	RN Position Growth	LPN Position Growth
Hospitals	4,536.6	324.7
Skilled Nursing	81	351.6
Home Health	1,407.1	915.8
Hospice	379.8	219.8
Public Health	54.6	27.9
<b>Totals</b>	<b>6,459.1</b>	<b>1,839.7</b>

### Median Turnover Rates for FY 2006-2007<sup>2</sup>

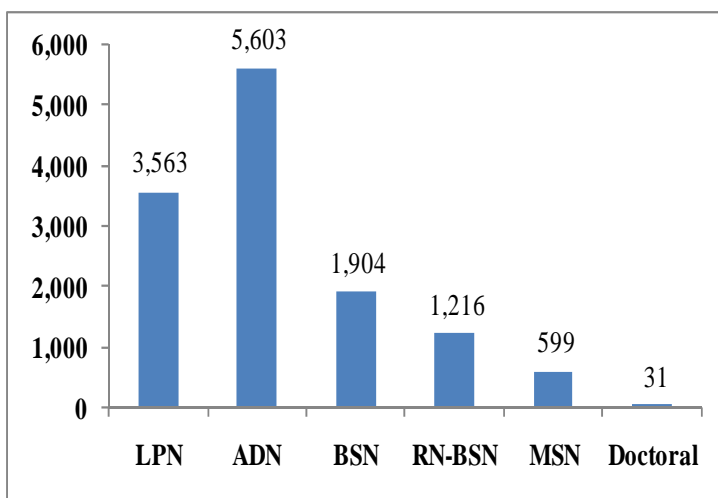


The estimated number of RN positions to be created during 2008 is 6,459. Another 1,839 LPN positions may be created. Most RN positions will be created in hospitals and home health agencies. Most LPN positions will be created in home health agencies and skilled nursing facilities. Median turnover rates are particularly high in skilled nursing facilities and hospices.

### Program Capacity in Academic Year 2007-2008<sup>4</sup>

	LPN Programs	ADN Programs	BSN Programs
# Qualified Applicants	7,713	14,660	5,880
# Admitted	5,338	7,370	2,982
# Turned Away	2,375	7,290	2,898
% Turned Away	30.79%	49.73%	49.29%

### Number of Graduates in Academic Year 2007-2008<sup>4</sup>



Almost 50% of qualified applicants to pre-licensure ADN programs and BSN programs were turned away in Academic Year 2007-2008. All totaled, the state produced 3,563 new graduate LPNs and 7,507 new graduate RNs. Full-time faculty vacancy rates were above 6% in LPN and ADN programs, and above 12% in BSN programs. Over the next two years, a total of 254 new full-time positions may be created.

### Full-Time Faculty Demand, 09/30/08<sup>4</sup>

	# of Vacancies	Vacancy Rate	Expected Position Growth Over Next 2 Years
LPN Programs	25	6.23%	82
ADN Programs	42	6.80%	104
BSN + Programs	64	12.21%	68

For more information and details about study designs and research methods, see:

1. Florida Center for Nursing. (2009). *Licensed Nurses in Florida: 2007-2009 Trends and Longitudinal Analysis*. [http://www.flcenterfornursing.org/files/Licensure\\_Trends\\_2007-2009.pdf](http://www.flcenterfornursing.org/files/Licensure_Trends_2007-2009.pdf)
2. Florida Center for Nursing. (2008). *2007 Nurse Employer Survey Methods and Statewide Results*. [http://www.flcenterfornursing.org/files/2007\\_Employer\\_Survey\\_Report.pdf](http://www.flcenterfornursing.org/files/2007_Employer_Survey_Report.pdf)
3. Florida Center for Nursing. (2008). *Statewide Vacancies and Job Growth Expectations in Nursing-Intensive Healthcare Settings*. [http://www.flcenterfornursing.org/files/Vacancies\\_Job\\_Growth.pdf](http://www.flcenterfornursing.org/files/Vacancies_Job_Growth.pdf)
4. Includes 100% of pre-licensure nursing programs. Two programs had not responded at the time of report publication for: Florida Center for Nursing. (2009). *2008 Nursing Education Program Annual Report and Workforce Survey*. [http://www.flcenterfornursing.org/files/2008\\_Education\\_Survey.pdf](http://www.flcenterfornursing.org/files/2008_Education_Survey.pdf)