

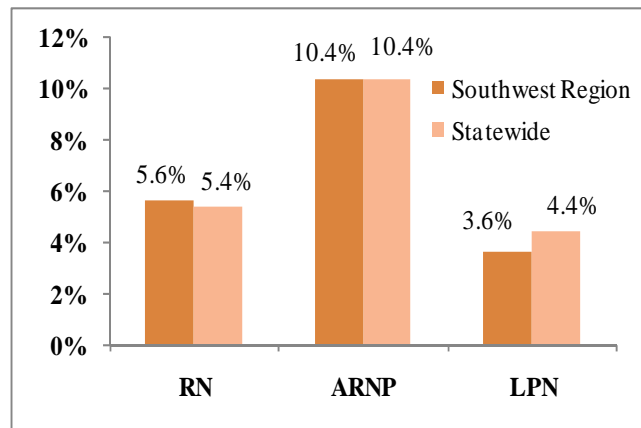
## Southwest Florida Status Report on Nursing Supply, Demand, and Education August 2009



Potential Nurse Workforce<sup>1</sup>

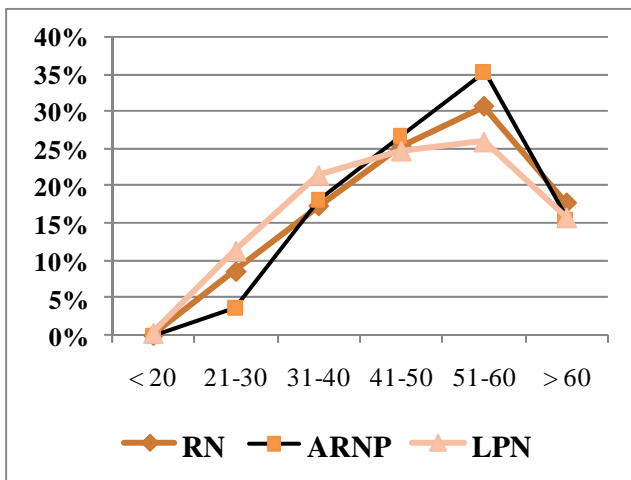
	2007	2009	Change in Size
<b>RN</b>	50,409	53,241	2,832
<b>ARNP</b>	3,352	3,700	348
<b>LPN</b>	19,476	20,183	707

% Change in Potential Nurse Workforce, 07-09<sup>1</sup>

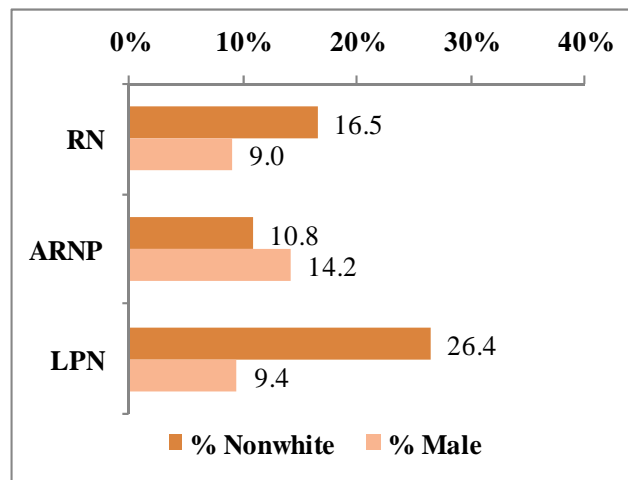


The potential RN, LPN, and ARNP workforces in Southwest Florida – those with an active license, eligibility to practice, and a Florida address – grew at a similar pace to the state as a whole.

Average Age: RN-49.0; ARNP-49.7; LPN-47.0<sup>1</sup>

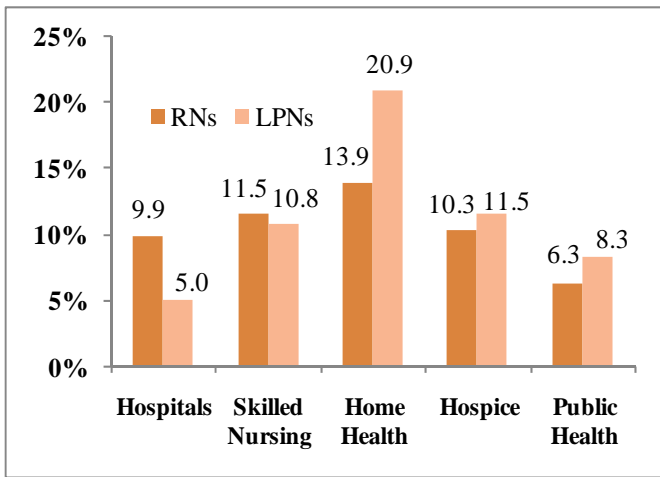


Gender and Racial/Ethnic Diversity<sup>1</sup>



As of January 2009, Southwest Florida's RNs and ARNPs were older (by about one year) and much less likely to come from minority racial/ethnic groups than was true statewide.

**Full-Time Equivalent Vacancy Rates By Industry as of 06/30/2007<sup>2</sup>**



**Estimated Full and Part-Time Vacancies as of 06/30/2007<sup>3</sup>**

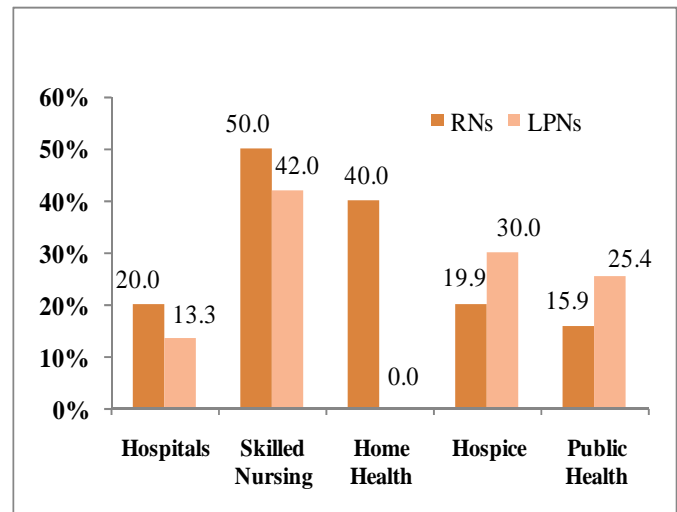
	Estimated RN Vacancies	Estimated LPN Vacancies
<b>Hospitals</b>	2,261.98	157.45
<b>Skilled Nursing</b>	304.36	566.26
<b>Home Health</b>	252.10	89.64
<b>Hospice</b>	99.80	35.02
<b>Public Health</b>	29.84	11.02
<b>Total</b>	<b>2,948.08</b>	<b>859.39</b>

Southwest Florida’s healthcare facilities have RN and LPN vacancy rates that are fairly typical of the state as a whole. The estimated number of vacancies as of June 30, 2007 was 2,948 for RNs and 859 for LPNs. The vast majority of RN vacancies were in hospitals, while most LPN vacancies were in skilled nursing facilities.

**Estimated Full and Part-Time Position Growth for 2008<sup>3</sup>**

	RN Position Growth	LPN Position Growth
<b>Hospitals</b>	1,167.56	122.38
<b>Skilled Nursing</b>	25.00	111.92
<b>Home Health</b>	350.62	154.44
<b>Hospice</b>	90.38	43.75
<b>Public Health</b>	15.64	7.25
<b>Totals</b>	<b>1,649.21</b>	<b>439.76</b>

**Median Turnover Rates for FY 2006-2007<sup>2</sup>**

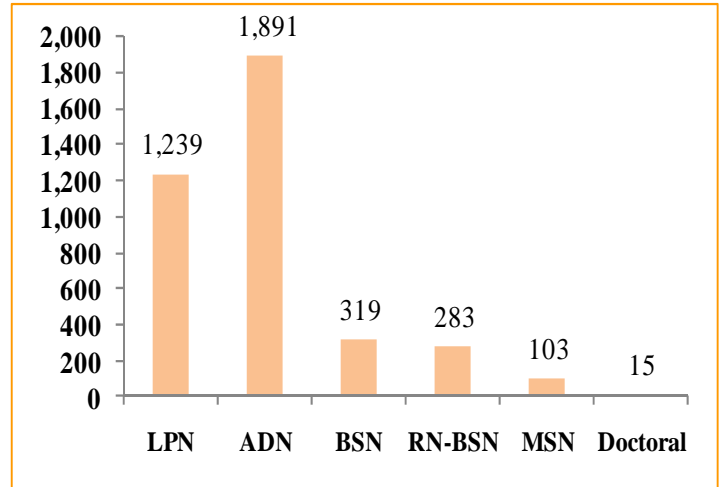


The estimated number of new positions to be created in Southwest Florida during 2008 is about 1,650 for RNs and 440 for LPNs. The majority of RN positions are expected within hospitals, while new LPN positions are more evenly split between hospitals, skilled nursing facilities, and home health agencies. Compared with statewide figures, turnover rates in this region are higher within skilled nursing facilities (RNs and LPNs), home health agencies (RNs only), and public health departments (RNs and LPNs).

### Program Capacity in Academic Year 2007-2008

### Number of Graduates in Academic Year 2007-2008<sup>4</sup>

	LPN Programs	ADN Programs	BSN Programs
# Qualified Applicants	2,542	3,687	742
# Admitted	1,888	1,960	403
# Turned Away	654	1,727	339
% Turned Away	25.73%	46.84%	45.69%



Southwest Florida turned away about the same proportion of qualified applicants to LPN, ADN and BSN programs as statewide. All totaled, the region produced 1,239 new graduate LPNs and 2,210 new graduate RNs. Although full-time faculty vacancy rates in ADN programs are lower than the statewide average, the rate in BSN and higher programs is much larger. Over the next two years, 70 new full-time faculty positions may be created.

### Full-Time Faculty Demand, 09/30/08<sup>4</sup>

	# of Vacancies	Vacancy Rate	Expected Position Growth Over Next 2 Years
LPN Programs	10	6.71%	29
ADN Programs	7	3.89%	31
BSN + Programs	23	19.49%	10

For more information and details about study designs and research methods, see:

1. Florida Center for Nursing. (2009). *Licensed Nurses in Florida: 2007-2009 Trends and Longitudinal Analysis*. [http://www.flcenterfornursing.org/files/Licensure\\_Trends\\_2007-2009.pdf](http://www.flcenterfornursing.org/files/Licensure_Trends_2007-2009.pdf)
2. Florida Center for Nursing. (2008). *2007 Nurse Employer Survey Methods and Statewide Results*. [http://www.flcenterfornursing.org/files/2007\\_Employer\\_Survey\\_Report.pdf](http://www.flcenterfornursing.org/files/2007_Employer_Survey_Report.pdf)
3. Florida Center for Nursing. (2008). *Statewide Vacancies and Job Growth Expectations in Nursing-Intensive Healthcare Settings*. [http://www.flcenterfornursing.org/files/Vacancies\\_Job\\_Growth.pdf](http://www.flcenterfornursing.org/files/Vacancies_Job_Growth.pdf)
4. Includes 100% of pre-licensure nursing programs. Two programs had not responded at the time of report publication for: Florida Center for Nursing. (2009). *2008 Nursing Education Program Annual Report and Workforce Survey*. [http://www.flcenterfornursing.org/files/2008\\_Education\\_Survey.pdf](http://www.flcenterfornursing.org/files/2008_Education_Survey.pdf)