

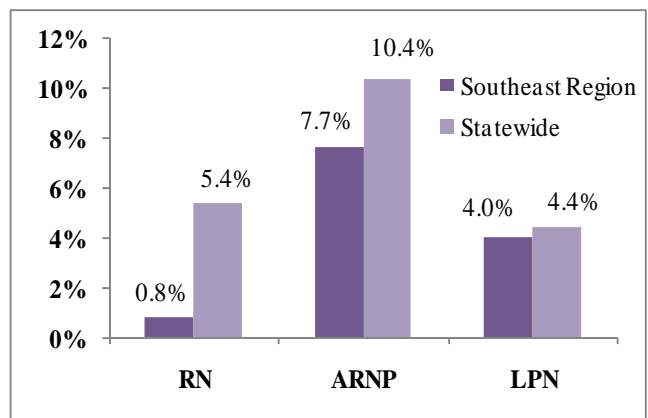
## Southeast Florida Status Report on Nursing Supply, Demand, and Education August 2009



**Potential Nurse Workforce<sup>1</sup>**

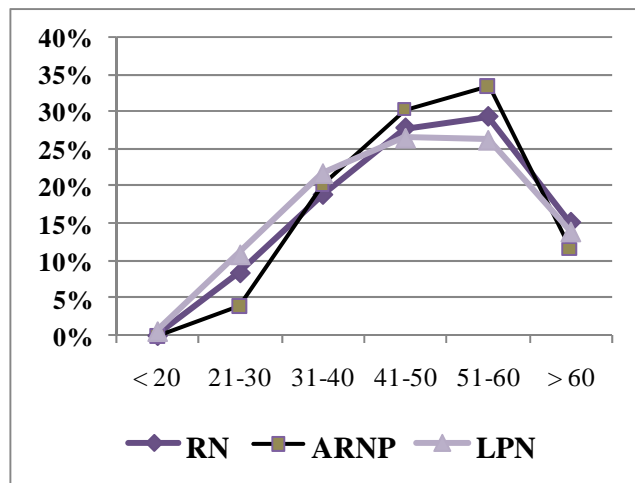
	2007	2009	Change in Size
<b>RN</b>	35,012	35,291	279
<b>ARNP</b>	1,931	2,079	148
<b>LPN</b>	10,348	10,762	414

**% Change in Potential Nurse Workforce, 07-09<sup>1</sup>**

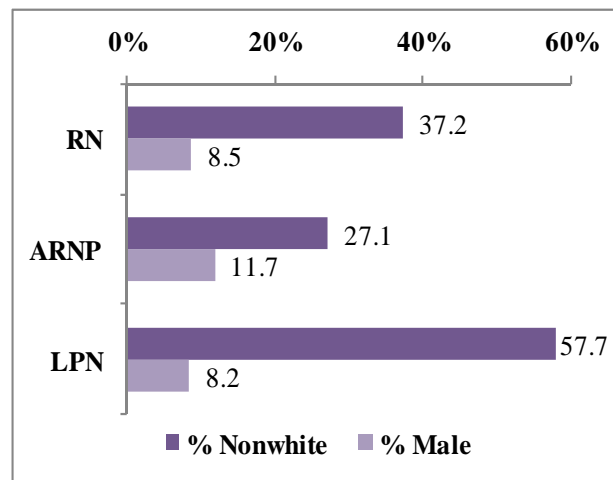


The potential RN and ARNP workforces in Southeast Florida – those with an active license, eligibility to practice, and a Florida address – grew much more slowly in percentage terms than was true statewide.

**Average Age: RN-48.2; ARNP-48.4; LPN-46.6<sup>1</sup>**

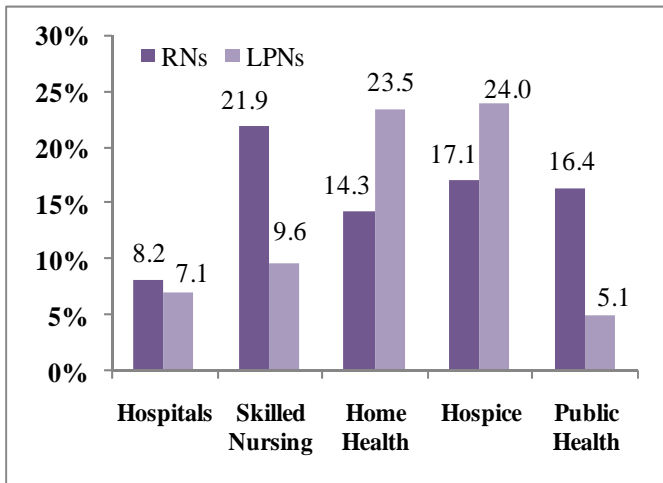


**Gender and Racial/Ethnic Diversity<sup>1</sup>**



As of January 2009, Southeast Florida is similar to the state as a whole in average nurse age and proportion of male nurses but contains a higher proportion of racial/ethnic minority nurses.

**Full-Time Equivalent Vacancy Rates By Industry as of 06/30/2007<sup>2</sup>**



**Estimated Full and Part-Time Vacancies as of 06/30/2007<sup>3</sup>**

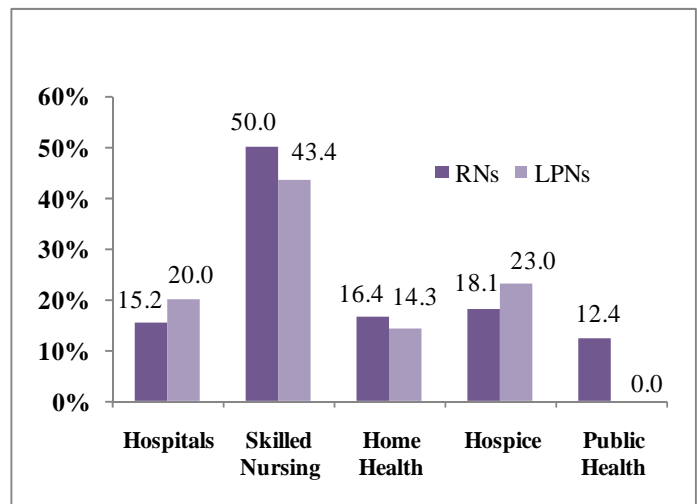
	Estimated RN Vacancies	Estimated LPN Vacancies
<b>Hospitals</b>	1,460.52	81.56
<b>Skilled Nursing</b>	177.11	298.85
<b>Home Health</b>	255.68	126.09
<b>Hospice</b>	147.08	60.65
<b>Public Health</b>	59.10	0.00
<b>Total</b>	<b>2,099.49</b>	<b>567.14</b>

Southeast Florida's vacancy rates for RNs in skilled nursing facilities, hospices, and public health departments are much higher than is true for the entire state. The LPN vacancy rate is also much higher in hospices. The estimated number of vacancies as of June 30, 2007 was 2,099 for RNs and 567 for LPNs.

**Estimated Full and Part-Time Position Growth for 2008<sup>3</sup>**

	RN Position Growth	LPN Position Growth
<b>Hospitals</b>	749.13	62.83
<b>Skilled Nursing</b>	4.00	60.93
<b>Home Health</b>	208.62	151.50
<b>Hospice</b>	73.12	44.27
<b>Public Health</b>	10.25	3.79
<b>Totals</b>	<b>1,045.10</b>	<b>323.32</b>

**Median Turnover Rates for FY 2006-2007<sup>2</sup>**

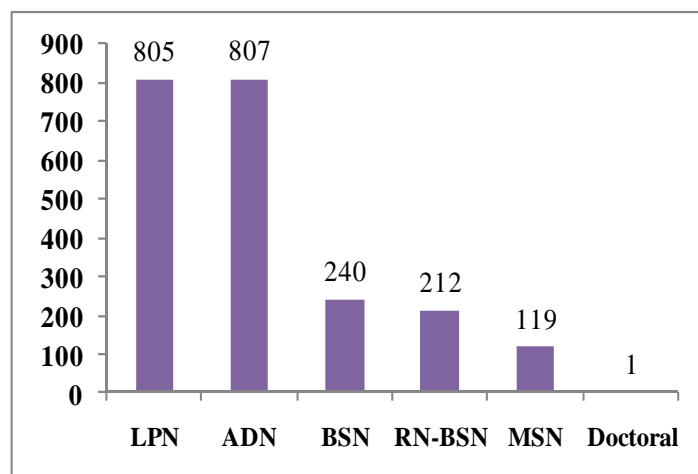


The estimated number of new RN positions to be created in Southeast Florida during 2008 is 1,045. About 323 LPN positions may be created in 2008. The majority of new RN positions are expected within hospitals, while about half of new LPN positions are expected within home health agencies. Turnover rates within Southeast Florida healthcare facilities are typical of the state as a whole with the exception that skilled nursing facilities reported higher RN and LPN turnover rates.

### Program Capacity in Academic Year 2007-2008<sup>4</sup>

	LPN Programs	ADN Programs	BSN Programs
# Qualified Applicants	1,108	1,713	953
# Admitted	1,108	1,397	369
# Turned Away	0	316	584
% Turned Away	0%	18.45%	61.28%

### Number of Graduates in Academic Year 2007-2008<sup>4</sup>



Southeast Florida turned away a much lower proportion of qualified applicants to LPN and ADN programs – but a higher proportion of qualified applicants to BSN programs – than was true statewide. All totaled, the region produced 805 new graduate LPNs and 1,047 new graduate RNs. Southeast Florida’s full-time faculty vacancy rates are lower for BSN programs and higher for LPN programs than is true statewide. Over the next two years, an additional 45 positions may be created in this region.

### Full-Time Faculty Demand, 09/30/08<sup>4</sup>

	# of Vacancies	Vacancy Rate	Expected Position Growth Over Next 2 Years
LPN Programs	9	10.59%	16
ADN Programs	4	5.19%	18
BSN + Programs	7	8.43%	11

For more information and details about study designs and research methods, see:

1. Florida Center for Nursing. (2009). *Licensed Nurses in Florida: 2007-2009 Trends and Longitudinal Analysis*. [http://www.flcenterfornursing.org/files/Licensure\\_Trends\\_2007-2009.pdf](http://www.flcenterfornursing.org/files/Licensure_Trends_2007-2009.pdf)
2. Florida Center for Nursing. (2008). *2007 Nurse Employer Survey Methods and Statewide Results*. [http://www.flcenterfornursing.org/files/2007\\_Employer\\_Survey\\_Report.pdf](http://www.flcenterfornursing.org/files/2007_Employer_Survey_Report.pdf)
3. Florida Center for Nursing. (2008). *Statewide Vacancies and Job Growth Expectations in Nursing-Intensive Healthcare Settings*. [http://www.flcenterfornursing.org/files/Vacancies\\_Job\\_Growth.pdf](http://www.flcenterfornursing.org/files/Vacancies_Job_Growth.pdf)
4. Includes 100% of pre-licensure nursing programs. Nine programs had not responded at the time of report publication for: Florida Center for Nursing. (2009). *2008 Nursing Education Program Annual Report and Workforce Survey*. [http://www.flcenterfornursing.org/files/2008\\_Education\\_Survey.pdf](http://www.flcenterfornursing.org/files/2008_Education_Survey.pdf)