

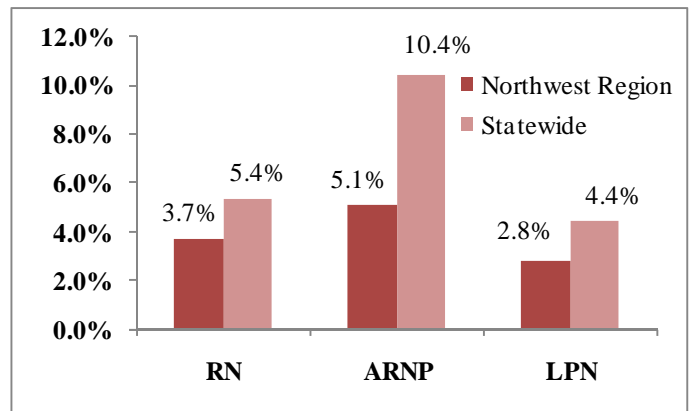
## Northwest Florida Status Report on Nursing Supply, Demand, and Education August 2009



Potential Nurse Workforce<sup>1</sup>

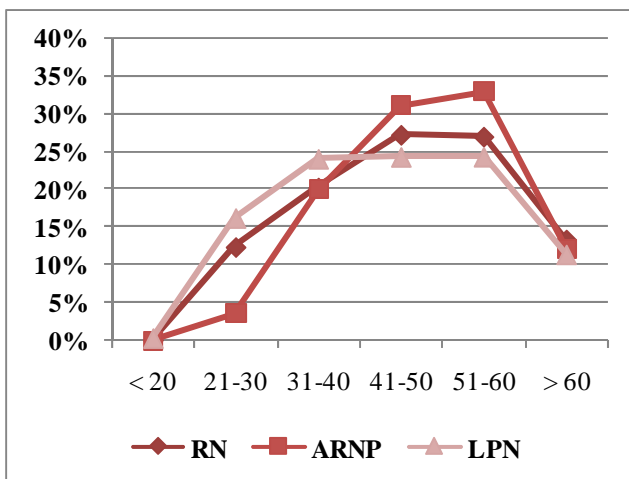
	2007	2009	Change in Size
<b>RN</b>	12,479	12,944	465
<b>ARNP</b>	960	1,009	49
<b>LPN</b>	5,275	5,423	148

% Change in Potential Nurse Workforce, 07-09<sup>1</sup>

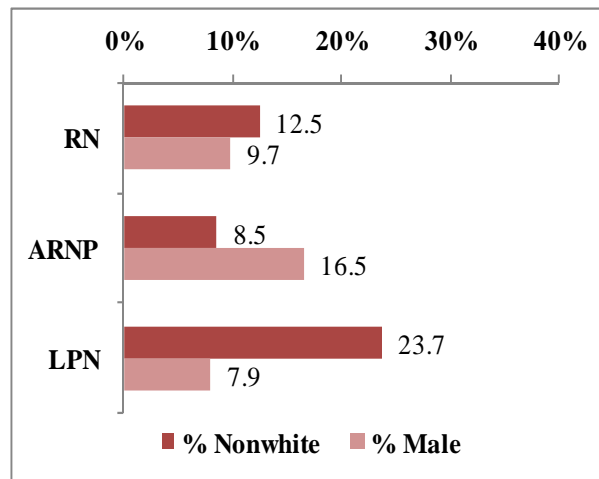


The potential LPN, RN, and ARNP workforces in Northwest Florida – those with an active license, eligibility to practice, and a Florida address – grew more slowly in percentage terms than statewide.

Average Age: RN-46.6; ARNP-48.9; LPN-44.7<sup>1</sup>

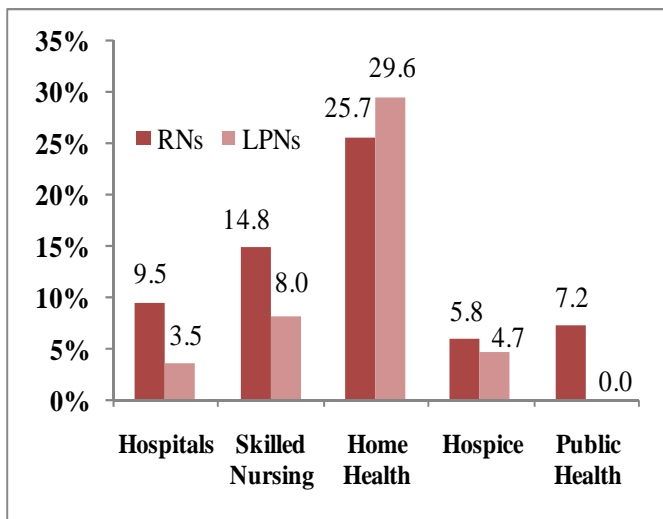


Gender and Racial/Ethnic Diversity<sup>1</sup>



As of January 2009, Northwest Florida's RNs and LPNs were younger than the average age for the entire state and much less likely to come from minority racial/ethnic groups.

### Full-Time Equivalent Vacancy Rates By Industry as of 06/30/2007<sup>2</sup>



### Estimated Full and Part-Time Vacancies as of 06/30/2007<sup>3</sup>

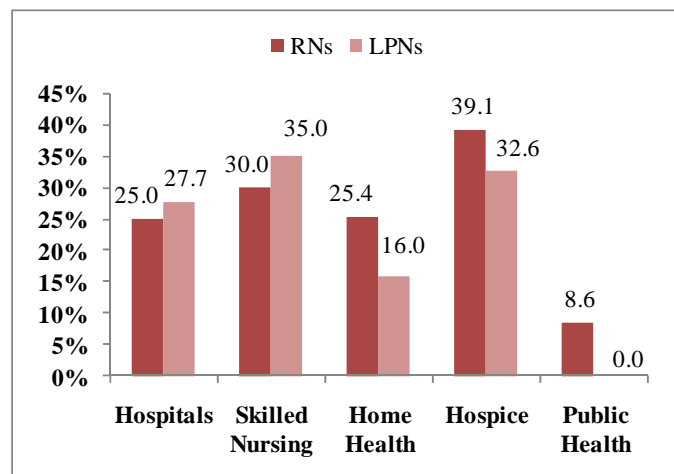
	Estimated RN Vacancies	Estimated LPN Vacancies
Hospitals	568.96	29.45
Skilled Nursing	82.18	132.40
Home Health	72.36	65.61
Hospice	17.30	6.24
Public Health	23.29	0.00
<b>Total</b>	<b>764.10</b>	<b>233.70</b>

Northwest Florida's vacancy rates were much higher in home health agencies than the state as a whole but were lower in hospices and public health departments. The estimated number of vacancies as of June 30, 2007 was 764 for RNs and 234 for LPNs. The majority of RN vacancies were within hospitals, while more than half of LPN vacancies were within skilled nursing facilities.

### Estimated Full and Part-Time Position Growth for 2008<sup>3</sup>

	RN Position Growth	LPN Position Growth
Hospitals	387.83	25.40
Skilled Nursing	4.00	27.26
Home Health	60.00	45.57
Hospice	24.45	21.92
Public Health	8.26	5.58
<b>Totals</b>	<b>484.54</b>	<b>125.72</b>

### Median Turnover Rates for FY 2006-2007<sup>2</sup>

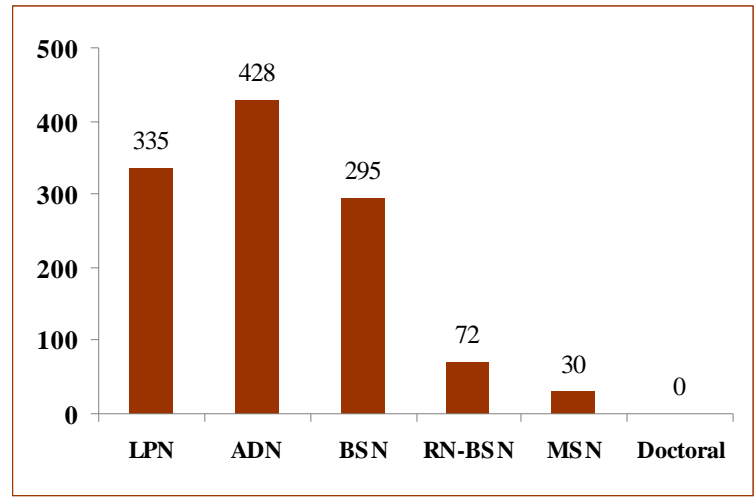


The estimated number of new RN positions to be created in Northwest Florida during 2008 is nearly 500. About 125 LPN positions may be created. The vast majority of RN positions will be created in hospitals, while home health agencies will create the most new LPN positions. Northwest Florida hospitals experienced higher RN and LPN turnover rates than was true statewide, while other settings reported rates similar to or lower than statewide figures.

### Program Capacity in Academic Year 2007-2008<sup>4</sup>

### Number of Graduates in Academic Year 2007-2008<sup>4</sup>

	LPN Programs	ADN Programs	BSN Programs
# Qualified Applicants	727	1,358	576
# Admitted	490	670	406
# Turned Away	237	688	170
% Turned Away	32.60%	50.66%	29.51%



Northwest Florida turned away similar percentages of LPN and ADN program applicants as was true statewide but admitted a larger proportion of qualified BSN program applicants. All totaled, the region produced 335 new graduate LPNs and 723 new graduate RNs. Full-time faculty vacancy rates were higher in Northwest Florida for ADN programs than was true statewide. Over the next two years, 26 new full-time faculty positions may be created.

### Full-Time Faculty Demand, 09/30/08<sup>4</sup>

	# of Vacancies	Vacancy Rate	Expected Position Growth Over Next 2 Years
LPN Programs	1	2.63%	6
ADN Programs	10	14.08%	13
BSN + Programs	7	9.21%	7

For more information and details about study designs and research methods, see:

1. Florida Center for Nursing. (2009). *Licensed Nurses in Florida: 2007-2009 Trends and Longitudinal Analysis*. [http://www.flcenterfornursing.org/files/Licensure\\_Trends\\_2007-2009.pdf](http://www.flcenterfornursing.org/files/Licensure_Trends_2007-2009.pdf)
2. Florida Center for Nursing. (2008). *2007 Nurse Employer Survey Methods and Statewide Results*. [http://www.flcenterfornursing.org/files/2007\\_Employer\\_Survey\\_Report.pdf](http://www.flcenterfornursing.org/files/2007_Employer_Survey_Report.pdf)
3. Florida Center for Nursing. (2008). *Statewide Vacancies and Job Growth Expectations in Nursing-Intensive Healthcare Settings*. [http://www.flcenterfornursing.org/files/Vacancies\\_Job\\_Growth.pdf](http://www.flcenterfornursing.org/files/Vacancies_Job_Growth.pdf)
4. Includes 100% of pre-licensure nursing programs. Two programs had not responded at the time of report publication for: Florida Center for Nursing. (2009). *2008 Nursing Education Program Annual Report and Workforce Survey*. [http://www.flcenterfornursing.org/files/2008\\_Education\\_Survey.pdf](http://www.flcenterfornursing.org/files/2008_Education_Survey.pdf)