

HRSA STATE HEALTH WORKFORCE PROFILES: FLORIDA

Summary provided by the Florida Center for Nursing

July 2005

Introduction

Presents a variety of data related to the health workforce in Florida. Per capita ratios are presented for comparisons with other states and the nation. Report provides:

- A brief overview of health status of residents and health services impacting the supply of and demand for health workers;
- Health care employment by place of work (hospitals, nursing homes, other); and
- Health care employment in the state.

Data presented for health services employment by place of work are based on Standard Industrial Classification system. Persons employed in more than one place may be counted more than once. The figures in different tables represent:

- Counts of professionals: estimates of numbers of individuals active in a profession at a given point in time; do not usually differentiate full-time vs. part-time employment.
- Employment estimates: generated using employer surveys without regard for full-time vs. part-time employment and individuals with more than one job may be counted more than once.
- Counts of licensees: can result in over-counting since some licensees may not be working, may be licensed in more than one state, or may be counted in more than one occupation.
- Full time equivalent: estimates consider full-time and part-time status where part-time count as a fraction of full-time; may still double count individuals working in multiple sites.

Florida is included in Region IV: Kentucky, Tennessee, North Carolina, South Carolina, Georgia, Alabama, Mississippi, and Florida.

Florida Population Data compared to US

- Total Population projected growth: 22% - 2000 to 2020 (65% - 1980 to 2000)
- Population 65 and over projected growth: 63% - 2000 to 2020 (67% 1980 to 2000)
- 1999 rate of deaths due to cancer and heart disease lower than national
- 2000 highest rate of reported AIDS cases in country
- 2000 ranked 20th in number of hospital beds per 100,000 population
- 1998 ranked 8th in health care expenditures per capita
- 2000 ranked 22nd in hospital inpatient days per capita
- 2000 ranked 24th in percent of total employment in health services sector

Health Services Employment by Place of Work

- Health services employment by occupation – US 2000
 - RNs 16% of total
 - LPNs 5% of total

Hospitals

- 2000 – Percent of health service workers employed: FL 41.6%; Region IV 45.9%; US 44.3%
- 2000 – FL 319 hospital beds per 100,000 population (US 292)
- 2000 – RNs largest single profession employed = 25.7% of hospital workforce; LPNs = 3.9%
- 1992-2000 – number of FTE per capita in FL declined by 1% (US 2% decline)

Nursing & Personal Care Facilities

- 2000 – Percent of health service workers employed: FL 13.9%; Region IV 15.1%; US 16.7%
- 2000 – FL ranked 46th in US in employment per 1,000 population 65+ and 39th in US in health services employment in nursing and personal care facilities
- 1999 – FL 30.3 nursing home beds per 1,000 population 65+ (US 51.5)
- 2000 – health service workers: 35.9% nursing aides, orderlies, & attendants; 11.3% LPNs; 8% RNs

Home Health Care Services

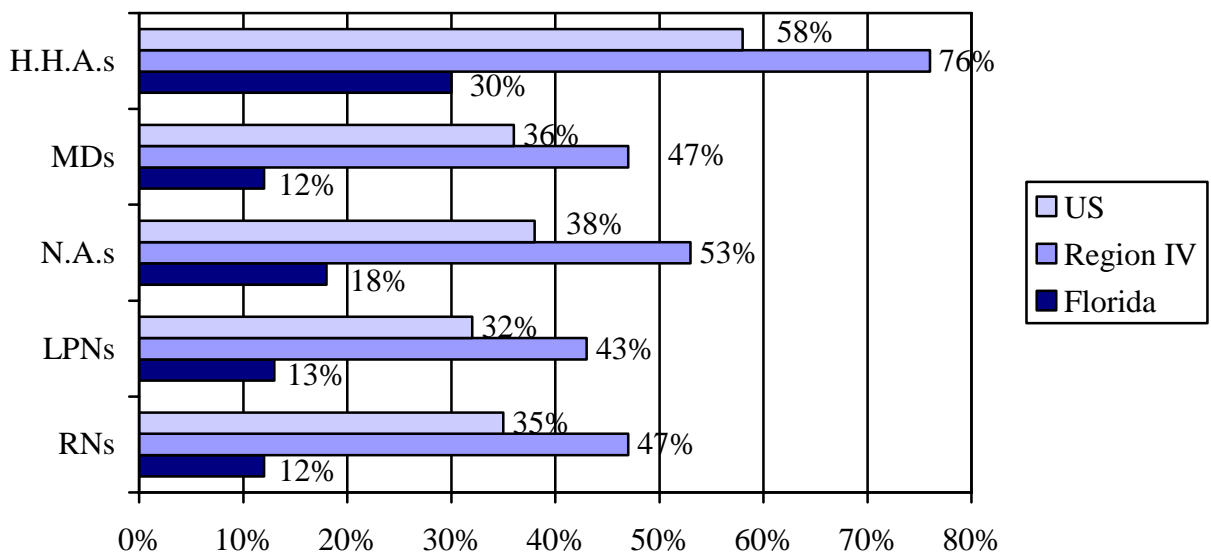
- 2000 – Percent of health service workers employed: FL 6.3%; Region IV 5.3%; US 5.7%
- 1990-2000 – FL employment per capita grew by 75% (US 98%)
- 2000 – health service workers: 50.5% personal care, home health, and nursing aides; 6.7% LPNs; 16.2% RNs

Offices & Clinics

- 2000 – Percent of health service workers employed: FL 31.6%; Region IV 28.1%; US 27.6%
- 2000 – FL ranked 9th in per capita employment in offices & clinics
- 2000 – health service workers in MD offices & clinics: 15.7% RNs

Health Professions

Projected Percentage Change in Employment per 100,000 Population, 1998 – 2008



Health Professions Summary, 2000

	Number Florida	Per 100,000 Population			FL Rank
		Florida	Region IV	US	
Registered Nurses	125,439	781.5	782.7	780.2	31/50
Nurse Practitioners	5,476	34.1	32.0	33.7	23/50
Licensed Practical Nurses	42,860	267.0	270.6	240.8	18/50
Home Health Aides	23,550	146.7	138.6	198.8	28/50
Nurse Aides	65,510	408.1	445.2	451.2	34/50

Health Professions Comparison – projected change, 1998 – 2008 & median hourly wage, 2000

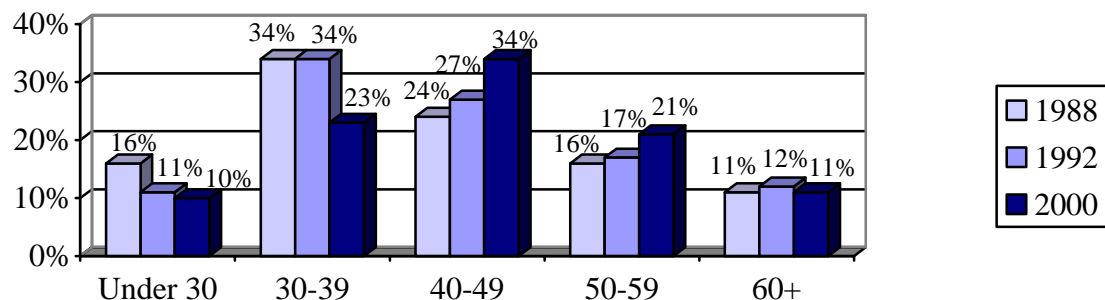
	Projected % Change		Median Hourly Wage	
	Florida	US	Florida	US
Registered Nurses	27.4%	22.0%	\$ 20.32	\$ 21.56
Licensed Practical Nurses	28.2%	19.5%	\$ 14.11	\$ 14.15
Home Health Aides	48.1%	42.5%	\$ 8.17	\$ 8.23
Nurse Aides	33.8%	24.3%	\$ 8.54	\$ 8.89

Registered Nurses (RNs)

Registered Nurses: Total & RNs Employed in Nursing, 2000

	Florida	Region IV	US	Rank
RNs Total	158,722	504,039	2,201,814	4/50
RNs Employed in Nursing	125,439	418,295	2,201,814	4/50
Per 100,000 Population	781.5	782.7	780.2	31/50
Percent Employed Full Time	80%	79%	71%	7/50

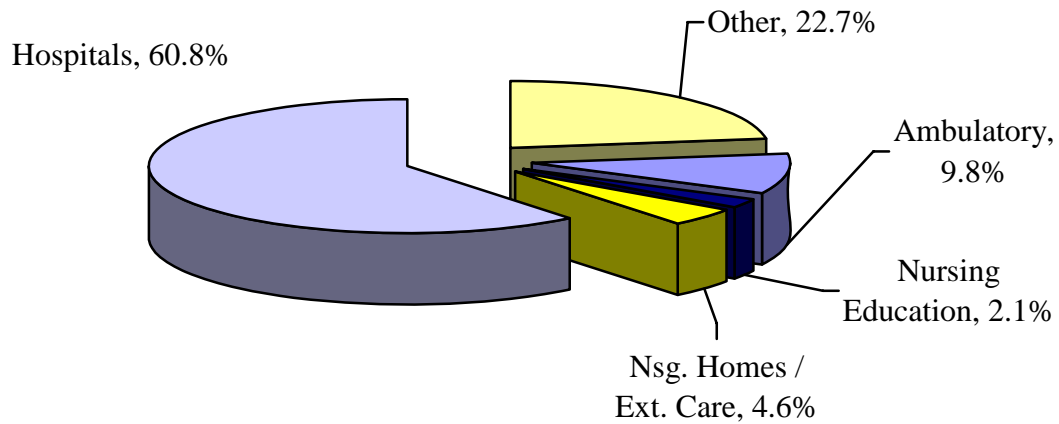
Age Distribution of RNs employed in nursing, South Atlantic Census Division, 2000



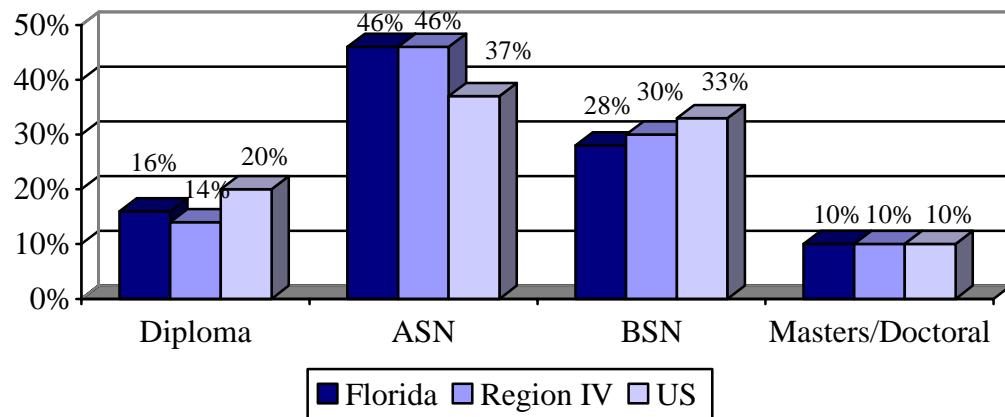
Race / Ethnicity of RNs employed in nursing compared to the population, South Atlantic Census Division, 2000

Non-Hispanic White:	RN 84.4% / Pop. 69.7%
Black / African American:	RN 8.6% / Pop. 21.3%
Hispanic / Latino (a):	RN 1.9% / Pop. 6.6%
Asian & Pacific Islander:	RN 2.3% / Pop. 2.0%
American Indian / Alaskan Native:	RN 0.5% / Pop. 0.4%

RNs by Place of Work, South Atlantic Census Division, 2000



Highest Nursing-related Educational attainment of RNs employed in nursing, 2000



Advanced Practice Nurses (APNs)

APNs by Selected Specialization

	Nurses Florida	Nurses per 100,000 population			
		Florida	Region IV	US	Rank
Nurse Practitioners, 2000	5,476	34.1	32.0	33.7	23/50
Certified Nurse-Midwives, 2000	620	3.9	2.9	2.9	16/50
Certified RN-Anesthetists, 2003	1,720	10.7	13.7	9.3	23/50

Race / Ethnicity and Gender of post-RN degree recipients & population, 1990-2000

Non-Hispanic White:	Post-RN 3.6% / Pop. 68.3%
Black / African American:	Post-RN 15.4% / Pop. 14.2%
Hispanic / Latino (a):	Post-RN 9.1% / Pop. 15.7%
Asian & Pacific Islander:	Post-RN 4.0% / Pop. 1.6%
American Indian / Alaskan Native:	Post-RN 0.0% / Pop. 0.3%
Female:	Post-RN 85.8% / Pop. 49%
Male:	Post-RN 14.2% / Pop. 51%

Licensed Practical/Vocational Nurses (LPNs)

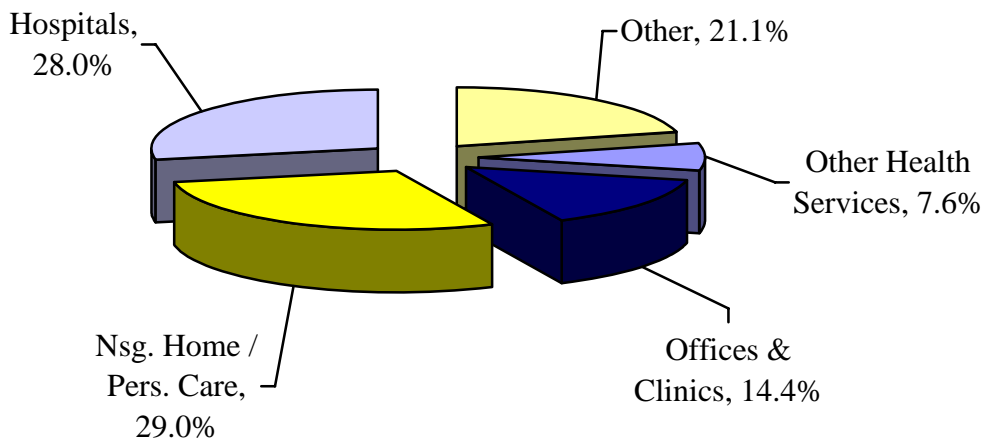
LPNs, 2000

	Florida	Region IV	US	Rank
LPNs Total	42,860	144,630	679,470	4/50
Per 100,000 Population	267.0	270.6	240.8	18/50
Per 100 RNs	34.2	34.6	30.9	17/50
Percent Female	-	-	94.7%	-

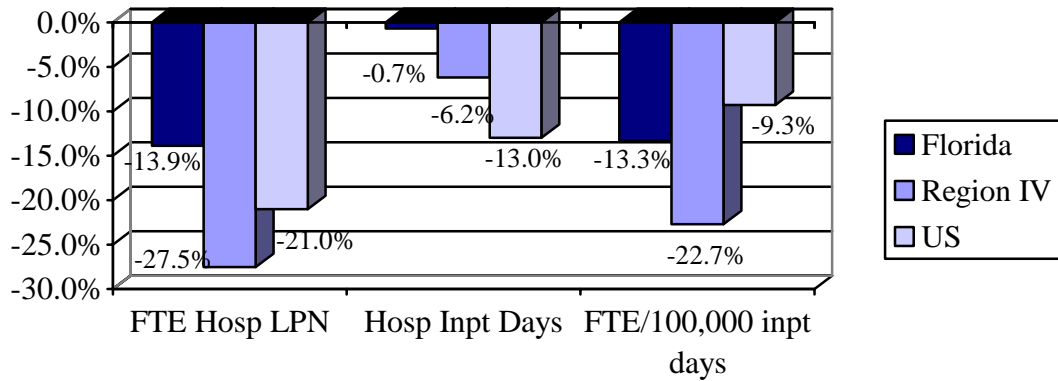
Race / Ethnicity and Gender of LPNs & population, 1990-2000

Non-Hispanic White:	LPN 72% / Pop. 72%
Black / African American:	LPN 21% / Pop. 12%
Hispanic / Latino (a):	LPN 5% / Pop. 11%
Asian & Pacific Islander:	LPN 2% / Pop. 4%
American Indian / Alaskan Native:	LPN 0% / Pop. 1%

LPNs by Place of Work, US, 2000



Percentage change in FTE hospital LPN employment, inpatient days & FTE hospital LPN employment per inpatient day, 1992-2000



Percentage change in LPN degrees awarded, population & LPN degrees per 100,000 population, 1995-96 to 1999-00

