

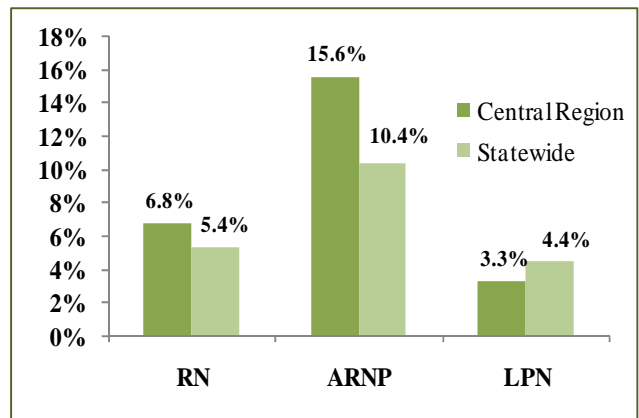
Central Florida Status Report on Nursing Supply, Demand, and Education August 2009



Potential Nurse Workforce¹

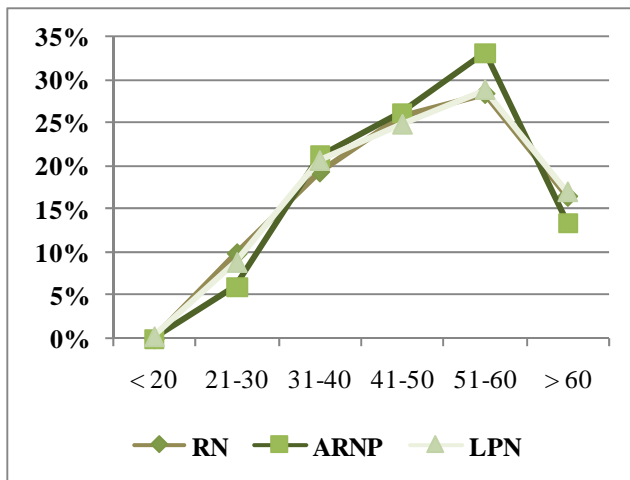
	2007	2009	Change in Size
RN	34,492	36,841	2,349
ARNP	1,712	1,979	267
LPN	10,930	11,289	359

% Change in Potential Nurse Workforce, 07-09¹

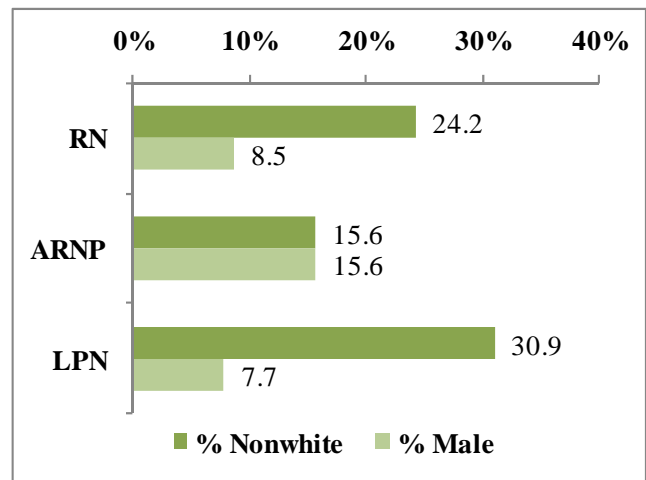


The potential RN and ARNP workforces in Central Florida – those with an active license, eligibility to practice, and a Florida address – grew slightly more rapidly in percentage terms than was true statewide.

Average Age: RN-48.0; ARNP-48.3; LPN-48.2¹

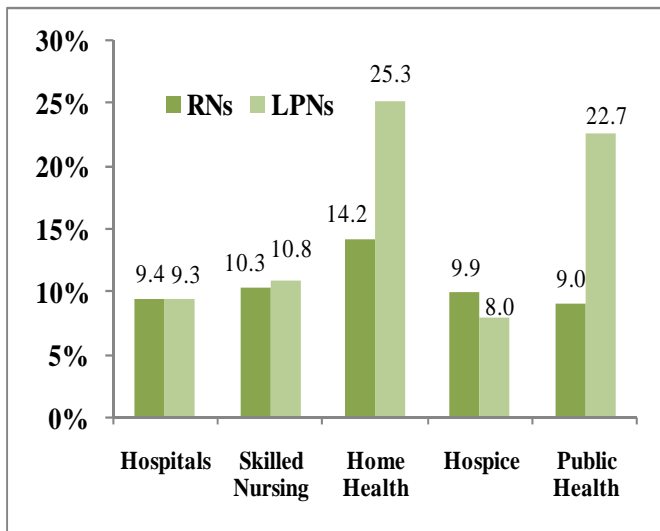


Gender and Racial/Ethnic Diversity¹



As of January 2009, Central Florida is similar to the state in RN and ARNP average age and proportion of male nurses but contains a lower proportion of racial/ethnic minority nurses. LPNs in Central Florida are slightly older (about 1.5 years).

Full-Time Equivalent Vacancy Rates By Industry as of 06/30/2007²



Estimated Full and Part-Time Vacancies as of 06/30/2007³

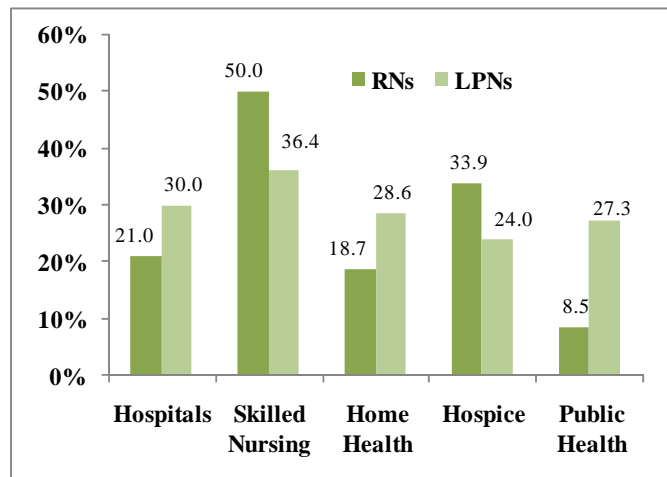
	Estimated RN Vacancies	Estimated LPN Vacancies
Hospitals	1,210.76	77.59
Skilled Nursing	203.27	393.47
Home Health	223.20	91.13
Hospice	111.16	37.49
Public Health	40.24	28.00
Total	1,788.64	627.69

Central Florida's vacancy rates are similar to the state as a whole, with the exception of a very high LPN vacancy rate within public health departments (22.7%). The estimated number of vacancies as of June 30, 2007 was 1,789 for RNs and 628 for LPNs. Most of the RN vacancies were within hospitals, while more than half of LPN vacancies were within skilled nursing facilities.

Estimated Full and Part-Time Position Growth for 2008³

	RN Position Growth	LPN Position Growth
Hospitals	710.88	47.88
Skilled Nursing	20.00	69.10
Home Health	236.52	106.16
Hospice	106.29	58.14
Public Health	14.93	9.05
Totals	1,088.62	290.34

Median Turnover Rates for FY 2006-2007²

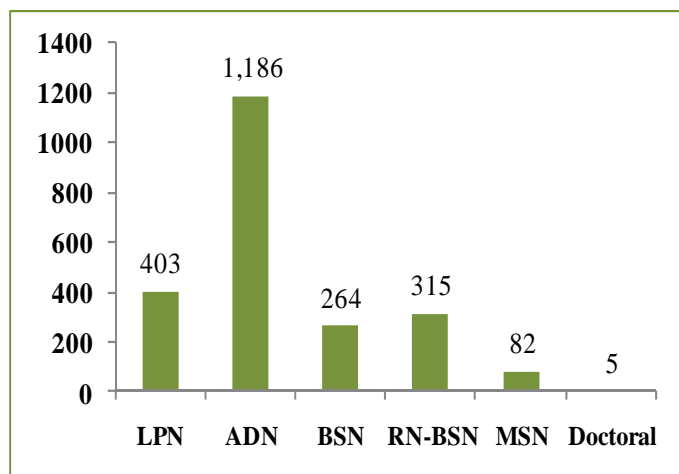


The estimated number of new RN positions to be created in Central Florida during 2008 is 1,089. About 290 LPN positions may be created in 2008. Most of the new RN positions will be created in hospitals, while home health agencies will create the most new LPN positions. As is true of the entire state, median turnover rates are highest in skilled nursing facilities. The turnover rate for LPNs in public health departments is unusually high compared with statewide values.

Program Capacity in Academic Year 2007-2008⁴

Number of Graduates in Academic Year 2007-2008⁴

	LPN Programs	ADN Programs	BSN Programs
# Qualified Applicants	888	2,321	682
# Admitted	632	1,649	401
# Turned Away	256	672	281
% Turned Away	28.83%	28.95%	41.20%



Central Florida nursing programs turned away a much lower percentage of qualified applicants to ADN programs than was true statewide. All totaled, the region produced 403 new graduate LPNs and 1,450 new graduate RNs. Full-time faculty vacancy rates were much lower for BSN programs and slightly higher for LPN and ADN programs than was true statewide. Over the next two years, 38 additional faculty positions may be created.

Full-Time Faculty Demand, 09/30/08⁴

	# of Vacancies	Vacancy Rate	Expected Position Growth Over Next 2 Years
LPN Programs	3	7.89%	13
ADN Programs	12	7.64%	20
BSN + Programs	4	6.25%	5

For more information and details about study designs and research methods, see:

1. Florida Center for Nursing. (2009). *Licensed Nurses in Florida: 2007-2009 Trends and Longitudinal Analysis*. http://www.flcenterfornursing.org/files/Licensure_Trends_2007-2009.pdf
2. Florida Center for Nursing. (2008). *2007 Nurse Employer Survey Methods and Statewide Results*. http://www.flcenterfornursing.org/files/2007_Employer_Survey_Report.pdf
3. Florida Center for Nursing. (2008). *Statewide Vacancies and Job Growth Expectations in Nursing-Intensive Healthcare Settings*. http://www.flcenterfornursing.org/files/Vacancies_Job_Growth.pdf
4. Includes 100% of pre-licensure nursing programs. Two programs had not responded at the time of report publication for: Florida Center for Nursing. (2009). *2008 Nursing Education Program Annual Report and Workforce Survey*. http://www.flcenterfornursing.org/files/2008_Education_Survey.pdf